

Academic Summer Semester – Marine Biology

5 unique Marine Biology courses – 3rd and 4th year levels plus advanced grad courses

- Marine Principles and Techniques
- Marine Ecology of Newfoundland Waters
- Estuarine Fish Ecology
- Boreal and Arctic Seaweeds
- Marine Mammals



Academic Summer Semester – Marine Biology

- 5 unique Marine Biology courses
- Courses taught consecutively
- Courses support multiple programs
 - SWGC – Environmental programs
 - St. John's – B.Sc. Biology
 - St. John's – other degrees
 - Graduate studies
 - Other universities



Curriculum Based Education.

Trading Books for Boats in Bonne Bay

- CURRA sponsored
- Designed to fulfill specific school curriculum learner outcomes



Immerse yourself in the story of the sea – experiential learning!

- Interactive Aquarium Tours,
- Education on the Ocean
- Curriculum Based School Programming
- Teacher & Teacher Intern Institutes

Partnerships are the key to success!



Community-University Research for Recovery Alliance (CURRA)

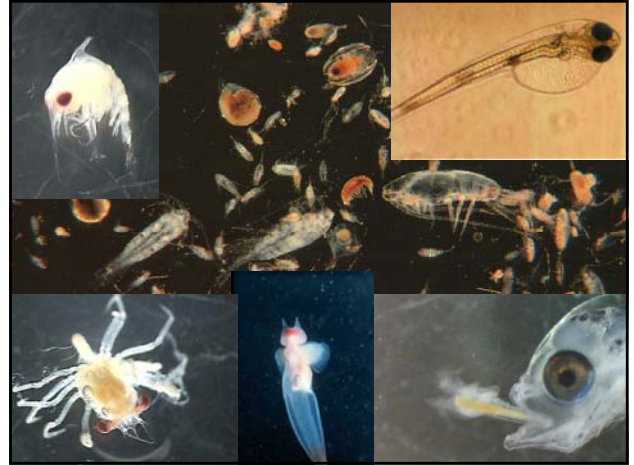
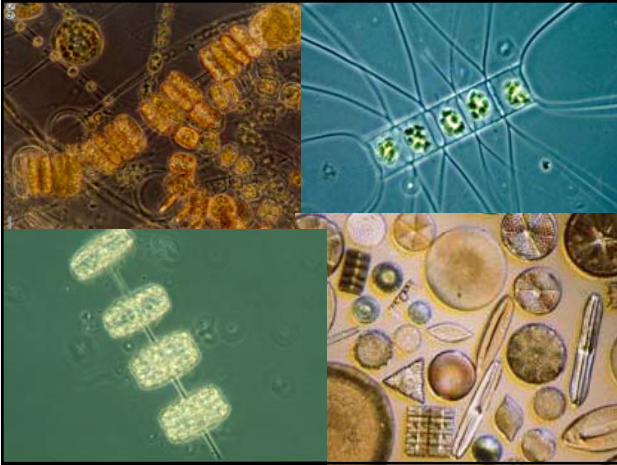
- Interdisciplinary research related to helping communities and organizations along Newfoundland's west coast develop strategies for the recovery of fish stocks and fishery communities.
- Centered at the Bonne Bay Marine Station
- Researchers from the social and natural sciences, and fine arts at Memorial University in St. John's and Sir Wilfred Grenfell College in Corner Brook
- Partnerships with numerous stakeholders and community organizations.



Serendipity: Birth of original field station

- Gulf of St. Lawrence Productivity research –led by McGill in partnership with other universities including Memorial 1969 to 1972
- Great variety of ecological habitats in Gros Morne Region – fjords, estuaries, salt marshes, tidepool platforms, eelgrass beds, Arctic basins etc = biological research opportunities
- Creation of Gros Morne National Park in 1973 = research funding





Intertidal biologist view of the community



Gadus morhua, Atlantic Cod, formerly reached large sizes in a local Bonne Bay population. These fish had immense heads and were capable of swallowing other codfish weighing over 30 pounds. This photograph was taken in the early 1970's.



Ye can't use townie rules here!




Alien life in Bonne Bay


Shared adversity bonding

- Pack ice devastates lobster gear
- Time to partner
- Triumphant celebrations
- First invitations to participate in community activities



Partnerships in fisheries management
– Fishers request temporary closure for stock recovery



Atlantic wolffish research was an example of a CURRA project initiated in response to community concerns.



Fishers and other community members contribute creatures to Station displays. The Station publicizes the contributors. Our 'lobster freak show' becomes a hit.



The Station has become a community information resource.



This American Eelpout is an unintended victim of policies to develop 'underutilized species' following the cod disaster.



Bonne Bay Beach Horse - named DFO?



Thanks to hundreds of students and colleagues and most of all, our Professors of Bonne Bay Studies – the people of Bonne Bay



Funders

	Social Sciences and Humanities Research Council of Canada	Conseil de recherches en sciences humaines du Canada	
			
	Parcs Canada		
		Fisheries and Oceans Canada	Pêches et Océans Canada