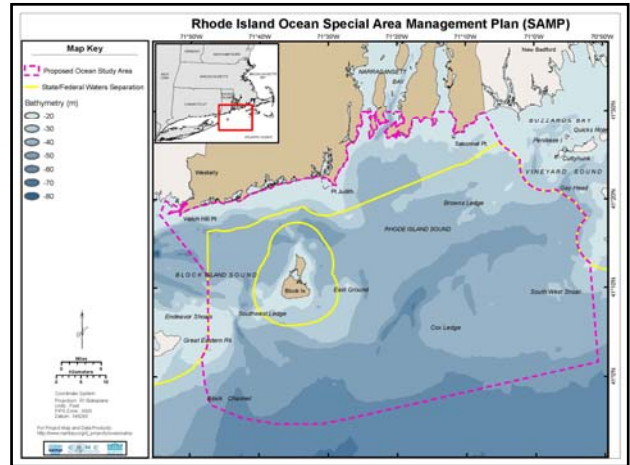


**Rhode Island OCEAN samp**

• Marine Spatial Planning For Renewable Energy

OSAMP logo



**Rhode Island Coastal Resources Management Council Ocean Special Area Management Plan (Ocean SAMP)**

**OSAMP Researchers**

- Sam DeLoe, URI Oceanography
- Peter August, URI Natural Resources Science
- Christopher C. Bassett, URI Ocean Engineering
- Dave Beate, RI CRMC
- John Sposito, URI GIS/GISD
- Sam DeLoe, URI Oceanography
- Jeremy Collins, URI Oceanography
- Brian Cooper, RI Sea Grant
- Teresa Green, URI Coastal Resources Center RI Sea Grant
- Chris Daniels, URI Natural Resources Science
- Denise Escobedo, Roger Williams University School of Law
- Paula Fagan, Roger Williams University School of Law
- Andrew G. Goffard, URI Oceanography
- Isabelle Granger, URI Oceanography
- Arnette Gull, URI Ocean Engineering
- Isabelle Gull, URI Ocean Engineering
- Jeffrey Harris, URI Ocean Engineering
- Brian Jones, URI Oceanography
- Ray Law, James H. Ulmer Ocean Engineering
- John Jensen, URI Underwater Archeology
- Robert Korman, URI Oceanography
- John A. Kopp, URI Oceanography
- Christina Laddin, URI Natural Resources Science
- Rob Palmer, URI History Underwater Archeology
- Robert French, URI Applied Science Associates
- Scott Williams, URI URI Natural Resources Science
- John Miller, URI Oceanography
- Scott Mason, URI Oceanography
- Robert O'Neil, URI Coastal Resources Center
- Caroline O'Neil, URI Oceanography
- Peer Platan, URI Natural Resources Science
- Joseph Ryan, URI Environmental Life Science
- Ken Peeters, URI Aquatic Society
- Neil Pellegrino, URI Oceanography
- Rod Pockar, URI Oceanography
- Chris Rupp, URI Oceanography
- Brenda Pitt, URI Oceanography
- Kathleen Vignesi, URI Natural Resources Science
- Laura Sirota, RI Sea Grant
- Theresa Smyth, URI Coastal Resources Center RI Sea Grant
- Melissa L. Winkler, URI Ocean Engineering
- Frank Thompson, Center for Environment, Fisheries & Aquaculture Science
- David Ullman, URI Oceanography

**Outreach Team**

- Michelle Hickey, URI - RI Sea Grant
- Marisa Anagnostou, URI - RI Sea Grant
- Marshall Hays, RI Sea Grant
- Sam Jenkins, URI Coastal Resources Center
- Arnette Korman, URI - RI Sea Grant
- Laura Rosenblatt-Hayes, RI CRMC
- Chris Young, URI Coastal Resources Center

**Federal Agency Advisory Committee**

- Management Policy Trust
- NCAA National Marine Fisheries Service
- US Army Corps of Engineers
- US Coast Guard
- US DOI Minerals Management Service
- US Environmental Protection Agency
- US Fish & Wildlife Service
- US Navy

**State Agency Advisory Committee**

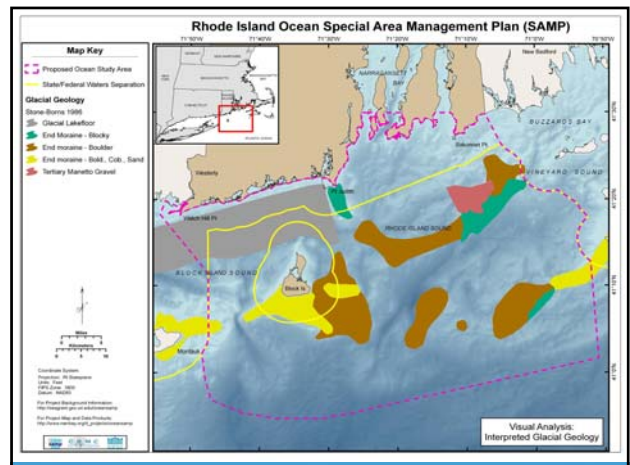
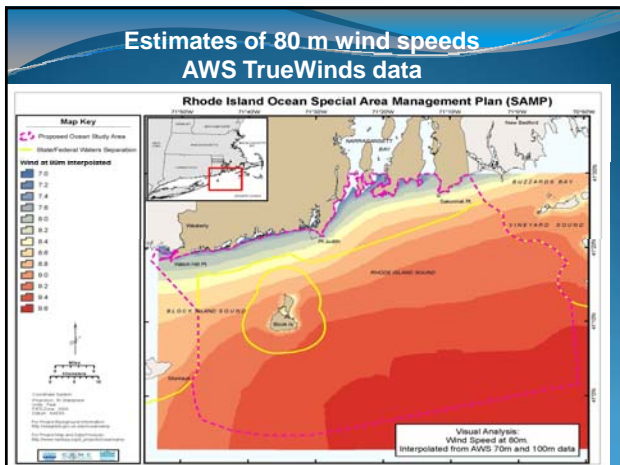
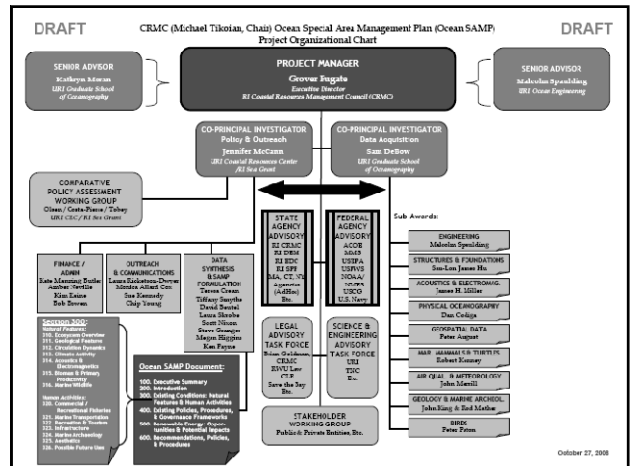
- RI Department of Environmental Management
- RI Economic Development Corporation
- RI Historical Preservation & Heritage Commission
- RI Interstate Planning Program
- ALDC
- Massachusetts DMV
- Connecticut DMV
- New York DMV

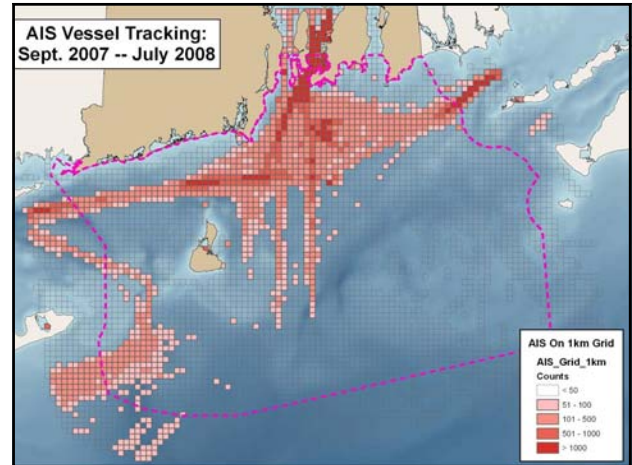
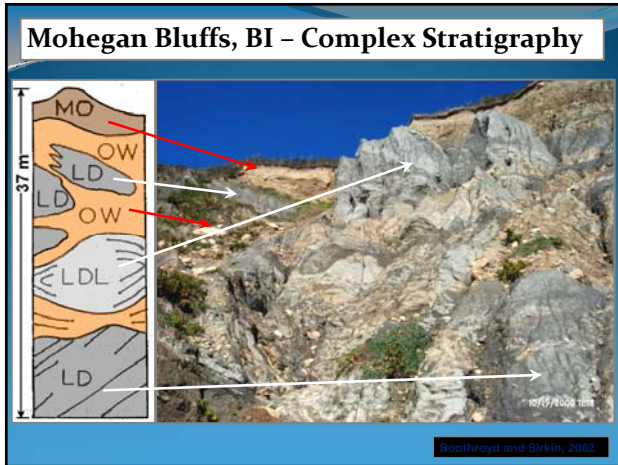
**Stakeholder Group**

- Dean Kenneth Payne
- Aquarium Island Planning Commission
- Adaptive Officers Leader Association
- Aukland Society of Rhode Island
- Block Island Town Council
- Charlestown Town Council
- City of Newport
- Commercial Fisheries Research Foundation
- Conservation Law Foundation
- Greater Providence Chamber of Commerce
- International Chamber of Commerce
- Jameson Trust Council
- Maritime Museum of the Americas
- Narragansett Chamber of Commerce
- Narragansett Indian Tribe
- Newport County Chamber of Commerce
- Newport County Convention and Visitors Bureau
- Northwest Marine Press
- Ocean State Agriculture Association
- Ocean State Fishermen's Association
- Rhode Island Power & Light
- Rhode Island Chamber/Travellers Association
- Rhode Island APOC
- Rhode Island Commerce Planners Association
- Rhode Island Fisheries Institute
- Rhode Island Historical Society
- Rhode Island Chamber of Commerce and Tourism
- Rhode Island Golfers Association
- Rhode Island Marine Trades Association
- Rhode Island Maritime Association
- Rhode Island Party & Charter Boat Association
- Rhode Island Seafarers' Association
- Rhode Island School of Design
- Rhode Island Wind Advisory
- Save the Bay
- Seamless Club
- South Kingstown Chamber of Commerce
- The Nature Conservancy
- URI
- Town of Narragansett
- Town of Mattapoisett
- Town of Narragansett
- Town of Westerly (Block Island)
- Town of South Kingstown
- Wilmington County Regional Planning Council
- Wickford Town Council
- Wind Power RI Project, Roger Williams University

**Legal Advisory Task Force**

- Chris Anderson, URI
- Jim Finer, State Attorney, Conservation Law Foundation, Rhode Island Attorney General
- Denise Escobedo, Roger Williams University School of Law
- Scott Pappas, Roger Williams University School of Law
- Wendy Walker, Save the Bay





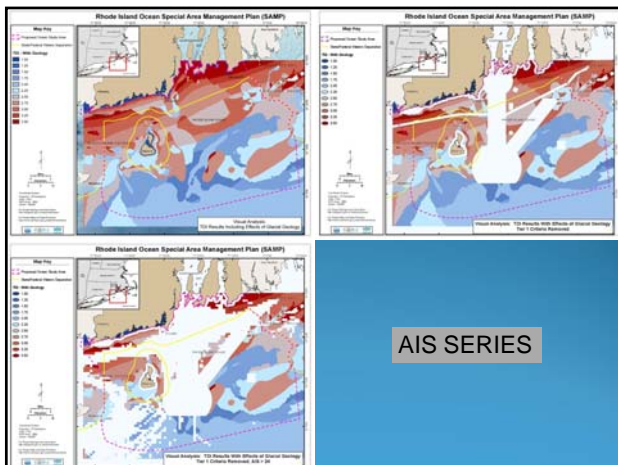
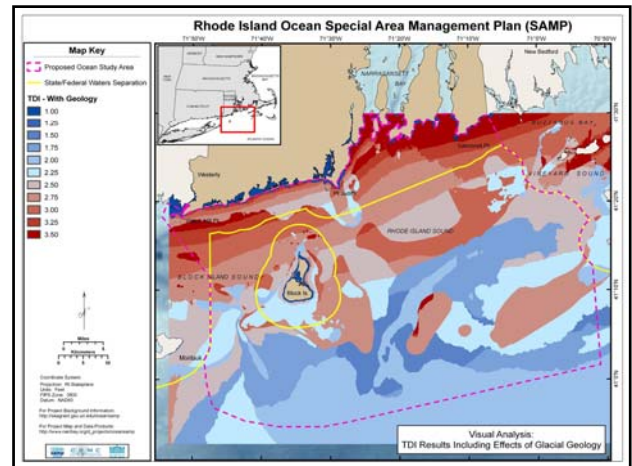
## Technology Based Assessment

**Objective:** Develop a metric based on technical challenge to power production potential to screen for sites.

$TDI = TCI/PPP$

where TDI – Technical Development Index  
 TCI- Technical Challenge Index  
 PPP- Power Production Potential

Presented in form of dimensionless values ( Predicted TDI divided by lowest TDI possible in area of interest)



## Marine User Data

- Commercial and recreational fishing
- Recreational boating
- Existing licenses (leases)
- Aggregate extraction
- Conservation
- Aquaculture

## Natural Resource Data

Birds

Fish and fish habitat

Marine mammals and turtles

Water and air quality

Historical and cultural resources