




The Gwich'in Renewable Resources Board: an example of northern co-management


People in Places Conference, Halifax Nova Scotia
June 26-29, 2011

Presented by
Amy Thompson, GRRB Executive Director



Presentation Outline

- ▶ Background on the Gwich'in people
- ▶ Land Claim Agreement
- ▶ Co-management
 1. Gwich'in Renewable Resources Board (GRRB)
 2. Renewable Resources Council (RRC)
 3. Policies
- ▶ Examples of co-management projects
- ▶ Dolly varden char story



The Gwich'in People

- ▶ Distinct but part of a bigger family known as the Athapaskans
- ▶ Northwest Territories, Yukon and Alaska
- ▶ Nomadic lifestyles
 - Porcupine caribou
 - Fishing
 - Trapping
- ▶ Language is most endangered aboriginal language in the NWT



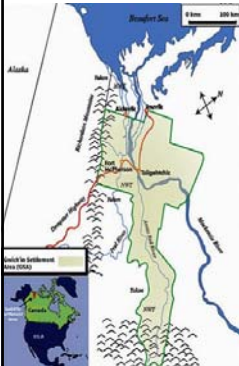


Photo from the Napoleon Norbert Collection, Tsiigehtchic



Land Claim Agreement



- ▶ Negotiated and signed by Canada, the territorial government and the Gwich'in Tribal Council (1992)
- ▶ Rights to the Gwich'in
- ▶ Land ownership
 - Establishment of the Gwich'in Settlement Area (GSA)
- ▶ Wildlife Management role



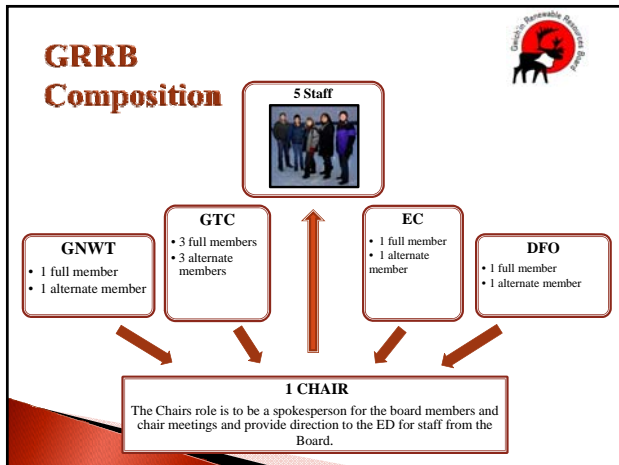
Co-management

- ▶ Working together!
 - Government (Canada and Territorial) and the Gwich'in
 - Surrounding regions for migratory species
- ▶ Obligation to consult
- ▶ Gwich'in Renewable Resources Board (GRRB)
- ▶ Renewable Resource Councils (RRC)




GRRB

- ▶ **Independent Co-management Board**
 - The main instrument of wildlife, fish and forest management in the Gwich'in Settlement Area
 - Acts in the public interest
- ▶ **Main responsibilities include:**
 - Approve management and protection plans
 - Establish policies and propose regulations for harvesting
 - Determining total allowable harvest levels (requires public hearing)
 - Review requests from government
 - Approve designation of conservation areas and endangered species



RRC responsibilities include...

- ▶ Local authority
- ▶ Allocates harvest amongst its community
- ▶ Advisory role with the GRRB
- ▶ Participates in the collection of harvest data
- ▶ Review and approves project proposals

Policies

- ▶ Strategic Plan
- ▶ Rules for Public Hearing
- ▶ Rules and Procedures for Consultation
 - Limit of harvest
 - Research
 - Traditional sharing
 - Advice to government
 - Wildlife Management

Examples of co-management

- ▶ Caribou
 - Barren-ground (NWT & Nunavut)
 - Boreal (national)
 - Porcupine (NWT, Yukon & Alaska)
- ▶ Dall's Sheep (NWT & Yukon)
- ▶ Grizzly Bear (GSA)
- ▶ Forest (GSA)
- ▶ Char (GSA and ISR)

Dolly Varden management Planning

Rat River Working Group

- ▶ Local concerns for the population prompted the establishment of this group.
- ▶ Membership is inclusive
- ▶ Rat River Fishing Plan
 - Annual meeting
 - Voluntary total allowable catch recommendation
 - Public meeting
 - Communication



Research




Community based Monitoring Program

Photo: Lois Harwood



Concerns with population

- ▶ Voluntary closure (2006-08)
- ▶ Voluntary allocation (2009-present)
- ▶ COSEWIC process
 - TK Report
 - Status Reports
 - Species of special concern
- ▶ Integrated Fisheries Management Plan (IFMP)




Summary

- ▶ Land claim agreement provided foundation for co-management
- ▶ Community support and compliance is directly linked to:
 - Relationships & Respect
 - Full involvement in every stage of the process
 - Consensus decisions
 - Communication




Haii Cho (Thank you)!

Contact Information:

Gwich'in Renewable Resources Board
 Po Box 2240
 Inuvik, NT
 X0E 0T0
 (867) 777-6600 (main line)
 (867) 777-6601 (fax)
www.grrb.nt.ca

Amy Thompson
 Executive Director
 (867) 777-6602 (office)
 (867) 678-0019 (cell)
 athompson@grrb.nt.ca

